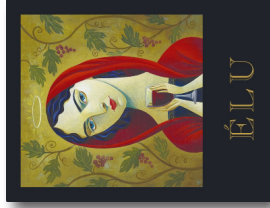


2018 NAPA VALLEY  
ESTATE ÉLU



**Appellation**  
Napa Valley

**Blend**  
64% cabernet sauvignon, 19% merlot,  
9% malbec, 6% petit verdot,  
3% cabernet franc

**Aromas**  
black plum - blackberry - black olive  
anise - graphite - vanillin

**Flavors**  
dried black plum - blackberry  
black licorice

**Winemaking**  
Aged in 100% French oak (47% new)  
for 20 months

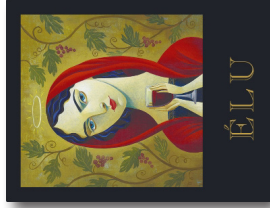
**Pairing Suggestions**  
Dry-Aged Beef • Rack of Lamb  
Braised Shortribs • Roasted Vegetables

**Accolades**

94 Points - James Suckling  
94 Points - Wine Enthusiast  
90 Points - Jeb Dunnuck  
90 Points - Decanter



2018 NAPA VALLEY  
ESTATE ÉLU



**Appellation**  
Napa Valley

**Blend**  
64% cabernet sauvignon, 19% merlot,  
9% malbec, 6% petit verdot,  
3% cabernet franc

**Aromas**  
black plum - blackberry - black olive  
anise - graphite - vanillin

**Flavors**  
dried black plum - blackberry  
black licorice

**Winemaking**  
Aged in 100% French oak (47% new)  
for 20 months

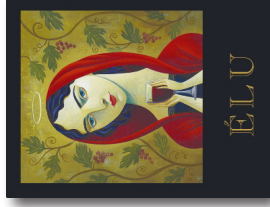
**Pairing Suggestions**  
Dry-Aged Beef • Rack of Lamb  
Braised Shortribs • Roasted Vegetables

**Accolades**

94 Points - James Suckling  
94 Points - Wine Enthusiast  
90 Points - Jeb Dunnuck  
90 Points - Decanter



2018 NAPA VALLEY  
ESTATE ÉLU



**Appellation**  
Napa Valley

**Blend**  
64% cabernet sauvignon, 19% merlot,  
9% malbec, 6% petit verdot,  
3% cabernet franc

**Aromas**  
black plum - blackberry - black olive  
anise - graphite - vanillin

**Flavors**  
dried black plum - blackberry  
black licorice

**Winemaking**  
Aged in 100% French oak (47% new)  
for 20 months

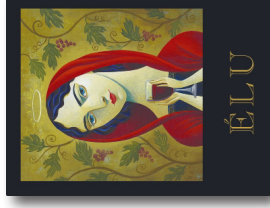
**Pairing Suggestions**  
Dry-Aged Beef • Rack of Lamb  
Braised Shortribs • Roasted Vegetables

**Accolades**

94 Points - James Suckling  
94 Points - Wine Enthusiast  
90 Points - Jeb Dunnuck  
90 Points - Decanter



2018 NAPA VALLEY  
ESTATE ÉLU



**Appellation**  
Napa Valley

**Blend**  
64% cabernet sauvignon, 19% merlot,  
9% malbec, 6% petit verdot,  
3% cabernet franc

**Aromas**  
black plum - blackberry - black olive  
anise - graphite - vanillin

**Flavors**  
dried black plum - blackberry  
black licorice

**Winemaking**  
Aged in 100% French oak (47% new)  
for 20 months

**Pairing Suggestions**  
Dry-Aged Beef • Rack of Lamb  
Braised Shortribs • Roasted Vegetables

**Accolades**

94 Points - James Suckling  
94 Points - Wine Enthusiast  
90 Points - Jeb Dunnuck  
90 Points - Decanter



STISUPÉRY  
ESTATE VINEYARDS & WINERY  
NAPA VALLEY

STISUPÉRY  
ESTATE VINEYARDS & WINERY  
NAPA VALLEY

STISUPÉRY  
ESTATE VINEYARDS & WINERY  
NAPA VALLEY

STISUPÉRY  
ESTATE VINEYARDS & WINERY  
NAPA VALLEY

**ST SUPÉRY**  
ESTATE VINEYARDS & WINERY  
NAPA VALLEY

St. Supéry Estate Vineyards and Winery is a 100% Estate Grown, sustainably farmed winery located in the renowned Rutherford growing region in the heart of Napa Valley.

Dollarhide Ranch is a 1,530+ acre property with steep, rolling hills, some flatlands, seven lakes and a vast array of wildlife located in the northeastern hills of Napa Valley.

With elevations ranging from 600 – 1,100 feet, we have planted over 500 acres of grapevines, leaving the rest of the property to thrive in its natural state.

**100% ESTATE GROWN**  
**SUSTAINABLY FARMED**

**NAPA GREEN CERTIFIED VINEYARD**  
**NAPA GREEN CERTIFIED WINERY**

LEARN MORE AT  
[STSUPERY.COM](https://STSUPERY.COM)



**ST SUPÉRY**  
ESTATE VINEYARDS & WINERY  
NAPA VALLEY

St. Supéry Estate Vineyards and Winery is a 100% Estate Grown, sustainably farmed winery located in the renowned Rutherford growing region in the heart of Napa Valley.

Dollarhide Ranch is a 1,530+ acre property with steep, rolling hills, some flatlands, seven lakes and a vast array of wildlife located in the northeastern hills of Napa Valley.

With elevations ranging from 600 – 1,100 feet, we have planted over 500 acres of grapevines, leaving the rest of the property to thrive in its natural state.

**100% ESTATE GROWN**  
**SUSTAINABLY FARMED**

**NAPA GREEN CERTIFIED VINEYARD**  
**NAPA GREEN CERTIFIED WINERY**

LEARN MORE AT  
[STSUPERY.COM](https://STSUPERY.COM)



**ST SUPÉRY**  
ESTATE VINEYARDS & WINERY  
NAPA VALLEY

St. Supéry Estate Vineyards and Winery is a 100% Estate Grown, sustainably farmed winery located in the renowned Rutherford growing region in the heart of Napa Valley.

Dollarhide Ranch is a 1,530+ acre property with steep, rolling hills, some flatlands, seven lakes and a vast array of wildlife located in the northeastern hills of Napa Valley.

With elevations ranging from 600 – 1,100 feet, we have planted over 500 acres of grapevines, leaving the rest of the property to thrive in its natural state.

**100% ESTATE GROWN**  
**SUSTAINABLY FARMED**

**NAPA GREEN CERTIFIED VINEYARD**  
**NAPA GREEN CERTIFIED WINERY**

LEARN MORE AT  
[STSUPERY.COM](https://STSUPERY.COM)



**ST SUPÉRY**  
ESTATE VINEYARDS & WINERY  
NAPA VALLEY

St. Supéry Estate Vineyards and Winery is a 100% Estate Grown, sustainably farmed winery located in the renowned Rutherford growing region in the heart of Napa Valley.

Dollarhide Ranch is a 1,530+ acre property with steep, rolling hills, some flatlands, seven lakes and a vast array of wildlife located in the northeastern hills of Napa Valley.

With elevations ranging from 600 – 1,100 feet, we have planted over 500 acres of grapevines, leaving the rest of the property to thrive in its natural state.

**100% ESTATE GROWN**  
**SUSTAINABLY FARMED**

**NAPA GREEN CERTIFIED VINEYARD**  
**NAPA GREEN CERTIFIED WINERY**

LEARN MORE AT  
[STSUPERY.COM](https://STSUPERY.COM)



**ST SUPÉRY**  
ESTATE VINEYARDS & WINERY  
NAPA VALLEY

©2023 St. Supéry, Inc. Rutherford, CA

**ST SUPÉRY**  
ESTATE VINEYARDS & WINERY  
NAPA VALLEY

©2023 St. Supéry, Inc. Rutherford, CA

**ST SUPÉRY**  
ESTATE VINEYARDS & WINERY  
NAPA VALLEY

©2023 St. Supéry, Inc. Rutherford, CA

**ST SUPÉRY**  
ESTATE VINEYARDS & WINERY  
NAPA VALLEY

©2023 St. Supéry, Inc. Rutherford, CA