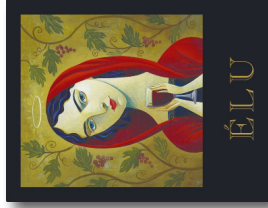


2021 NAPA VALLEY  
ESTATE ÉLU



**Appellation**  
Napa Valley

**Blend**  
70% Cabernet Sauvignon,  
14% Merlot, 10% Malbec,  
3% Petit Verdot

**Aromas**

black cherry - boysenberry  
Mission fig - graphite - espresso bean

**Flavors**

plum - dark cherry - cassis  
toasted oak - dried herbs

**Winemaking**

100% French oak (61% new) for  
19 months

**Pairing Suggestions**

Dry-Aged Beef - Rack of Lamb  
Braised Shortribs - Roasted Vegetables

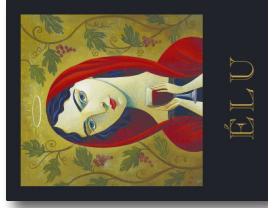
**Accolades**

94 Points - Tasting Panel/Somm Journal  
94 Points - James Suckling  
93 Points - Wine Enthusiast  
90 Points - Wine Advocate  
90 Points - The Tasting Palate



STISUPÉRY  
ESTATE VINEYARDS & WINERY  
NAPA VALLEY

2021 NAPA VALLEY  
ESTATE ÉLU



**Appellation**  
Napa Valley

**Blend**  
70% Cabernet Sauvignon,  
14% Merlot, 10% Malbec,  
3% Petit Verdot

**Aromas**

black cherry - boysenberry  
Mission fig - graphite - espresso bean

**Flavors**

plum - dark cherry - cassis  
toasted oak - dried herbs

**Winemaking**

100% French oak (61% new) for  
19 months

**Pairing Suggestions**

Dry-Aged Beef - Rack of Lamb  
Braised Shortribs - Roasted Vegetables

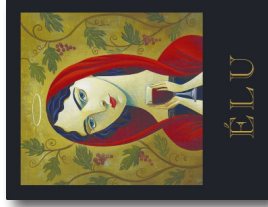
**Accolades**

94 Points - Tasting Panel/Somm Journal  
94 Points - James Suckling  
93 Points - Wine Enthusiast  
90 Points - Wine Advocate  
90 Points - The Tasting Palate



STISUPÉRY  
ESTATE VINEYARDS & WINERY  
NAPA VALLEY

2021 NAPA VALLEY  
ESTATE ÉLU



**Appellation**  
Napa Valley

**Blend**  
70% Cabernet Sauvignon,  
14% Merlot, 10% Malbec,  
3% Petit Verdot

**Aromas**

black cherry - boysenberry  
Mission fig - graphite - espresso bean

**Flavors**

plum - dark cherry - cassis  
toasted oak - dried herbs

**Winemaking**

100% French oak (61% new) for  
19 months

**Pairing Suggestions**

Dry-Aged Beef - Rack of Lamb  
Braised Shortribs - Roasted Vegetables

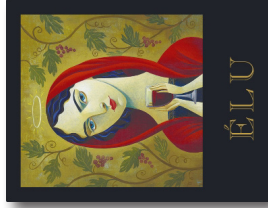
**Accolades**

94 Points - Tasting Panel/Somm Journal  
94 Points - James Suckling  
93 Points - Wine Enthusiast  
90 Points - Wine Advocate  
90 Points - The Tasting Palate



STISUPÉRY  
ESTATE VINEYARDS & WINERY  
NAPA VALLEY

2021 NAPA VALLEY  
ESTATE ÉLU



**Appellation**  
Napa Valley

**Blend**  
70% Cabernet Sauvignon,  
14% Merlot, 10% Malbec,  
3% Petit Verdot

**Aromas**

black cherry - boysenberry  
Mission fig - graphite - espresso bean

**Flavors**

plum - dark cherry - cassis  
toasted oak - dried herbs

**Winemaking**

100% French oak (61% new) for  
19 months

**Pairing Suggestions**

Dry-Aged Beef - Rack of Lamb  
Braised Shortribs - Roasted Vegetables

**Accolades**

94 Points - Tasting Panel/Somm Journal  
94 Points - James Suckling  
93 Points - Wine Enthusiast  
90 Points - Wine Advocate  
90 Points - The Tasting Palate



STISUPÉRY  
ESTATE VINEYARDS & WINERY  
NAPA VALLEY



**ST SUPÉRY**  
ESTATE VINEYARDS & WINERY  
NAPA VALLEY

St. Supéry Estate Vineyards and Winery is a 100% Estate Grown, sustainably farmed winery located in the renowned Rutherford growing region in the heart of Napa Valley.

Dollarhide Ranch is a 1,530+ acre property with steep, rolling hills, some flatlands, seven lakes and a vast array of wildlife located in the northeastern hills of Napa Valley.

With elevations ranging from 600 – 1,100 feet, we have planted over 500 acres of grapevines, leaving the rest of the property to thrive in its natural state.

**100% ESTATE GROWN**  
**SUSTAINABLY FARMED**

**NAPA GREEN CERTIFIED VINEYARD**  
**NAPA GREEN CERTIFIED WINERY**

LEARN MORE AT  
[STSUPERY.COM](https://STSUPERY.COM)



**ST SUPÉRY**  
ESTATE VINEYARDS & WINERY  
NAPA VALLEY

St. Supéry Estate Vineyards and Winery is a 100% Estate Grown, sustainably farmed winery located in the renowned Rutherford growing region in the heart of Napa Valley.

Dollarhide Ranch is a 1,530+ acre property with steep, rolling hills, some flatlands, seven lakes and a vast array of wildlife located in the northeastern hills of Napa Valley.

With elevations ranging from 600 – 1,100 feet, we have planted over 500 acres of grapevines, leaving the rest of the property to thrive in its natural state.

**100% ESTATE GROWN**  
**SUSTAINABLY FARMED**

**NAPA GREEN CERTIFIED VINEYARD**  
**NAPA GREEN CERTIFIED WINERY**

LEARN MORE AT  
[STSUPERY.COM](https://STSUPERY.COM)



**ST SUPÉRY**  
ESTATE VINEYARDS & WINERY  
NAPA VALLEY

St. Supéry Estate Vineyards and Winery is a 100% Estate Grown, sustainably farmed winery located in the renowned Rutherford growing region in the heart of Napa Valley.

Dollarhide Ranch is a 1,530+ acre property with steep, rolling hills, some flatlands, seven lakes and a vast array of wildlife located in the northeastern hills of Napa Valley.

With elevations ranging from 600 – 1,100 feet, we have planted over 500 acres of grapevines, leaving the rest of the property to thrive in its natural state.

**100% ESTATE GROWN**  
**SUSTAINABLY FARMED**

**NAPA GREEN CERTIFIED VINEYARD**  
**NAPA GREEN CERTIFIED WINERY**

LEARN MORE AT  
[STSUPERY.COM](https://STSUPERY.COM)



**ST SUPÉRY**  
ESTATE VINEYARDS & WINERY  
NAPA VALLEY

St. Supéry Estate Vineyards and Winery is a 100% Estate Grown, sustainably farmed winery located in the renowned Rutherford growing region in the heart of Napa Valley.

Dollarhide Ranch is a 1,530+ acre property with steep, rolling hills, some flatlands, seven lakes and a vast array of wildlife located in the northeastern hills of Napa Valley.

With elevations ranging from 600 – 1,100 feet, we have planted over 500 acres of grapevines, leaving the rest of the property to thrive in its natural state.

**100% ESTATE GROWN**  
**SUSTAINABLY FARMED**

**NAPA GREEN CERTIFIED VINEYARD**  
**NAPA GREEN CERTIFIED WINERY**

LEARN MORE AT  
[STSUPERY.COM](https://STSUPERY.COM)



**ST SUPÉRY**  
ESTATE VINEYARDS & WINERY  
NAPA VALLEY

©2025 St. Supéry, Inc. Rutherford, CA

**ST SUPÉRY**  
ESTATE VINEYARDS & WINERY  
NAPA VALLEY

©2025 St. Supéry, Inc. Rutherford, CA

**ST SUPÉRY**  
ESTATE VINEYARDS & WINERY  
NAPA VALLEY

©2025 St. Supéry, Inc. Rutherford, CA

**ST SUPÉRY**  
ESTATE VINEYARDS & WINERY  
NAPA VALLEY

©2025 St. Supéry, Inc. Rutherford, CA